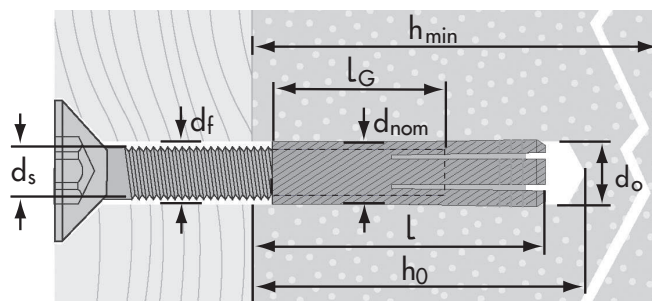




MMD Brass Anchor



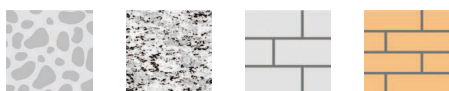
Name

Anchor Brass

Features

- Face fixing
- Shallow drilling depth
- High corrosion and heat resistances

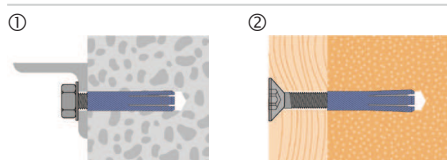
Building materials



Characteristics

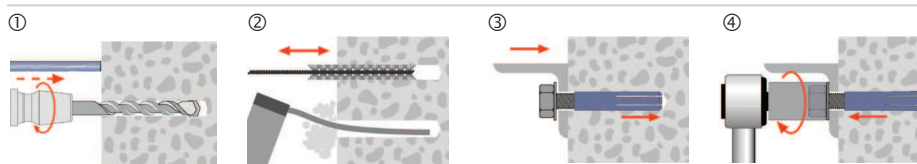
- Internally threaded anchor with metric connecting threads
- The grooved and knurled anchor sleeve expands by turning in the screw
- Form fit in soft building materials / end expansion in solid building materials

Applications



- ① End expansion in solid building material
- ② Form fit in soft building material


Installation



- ① Drilling with depth gauge rod
- ② Clean the drill hole
- ③ Insert the Brass Anchor with pre-assembled screw into the drill hole until the screw head is flush to the building materials
- ④ Tighten the screw with accuracy (anchor will be retracted a little from the drill hole)



MMD

Anchor size		M4	M5	M6	M 8	M 10	M 12	M16
N _{Rec}	- Concrete uncracked C25 - C60	0.5	0.7	0.85	1.5	2.5	3.5	3.9
	- Brick	0.4	0.55	0.7	1.2	1.6	2	3.25
c _{min}	Min. distance to edge	30	35	40	45	50	55	65
s _{min}	Min. distance betw. anchors	50	50	60	65	70	75	90
h _{min}	Min. thickness base material	25	27	35	40	45	50	53
d _s	For screw-Ø	4	5	6	8	10	12	16
h ₀	Drill hole depth	20	25	28	35	40	45	50
d ₀	Drill hole-Ø in the building material	5	6.5	8	10	12	15	20
d _f	Clearance hole in fixture	5	6	7	9	12	14	18
l _G	Thread length	11	14	15	18	22	21	25
d _{nom}	Outside-Ø plug	5	6	8	10	12	15	20
l	Anchor length	16	20	22	27	32	32	45
		1730004	1730005	1730006	1730008	1730010	1730012	1730016

MMD Brass Anchor

1) Without influence of anchor and edge distance / Safety factor 3