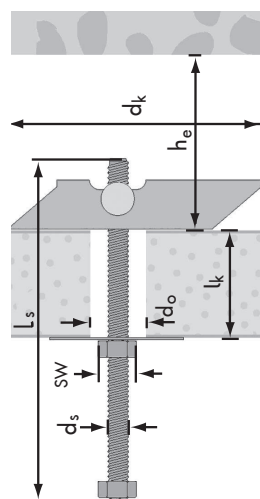
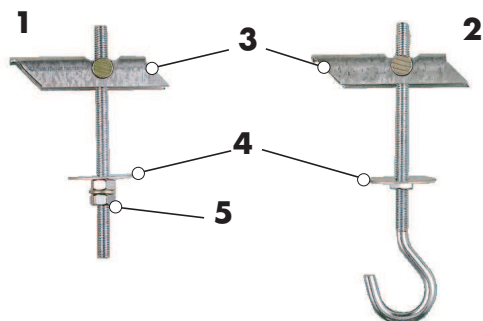


MK Cavity Toggle



Name

| | | | | | |
|---|--------------------|-------------------|---|-----------------|-------------------|
| 1 | Cavity Toggle MK-M | Zinc plated steel | 4 | Nut with washer | Zinc plated steel |
| 2 | Cavity Toggle MK-H | Zinc plated steel | 5 | Assembling nut | Zinc plated steel |
| 3 | Toggle element | Zinc plated steel | | | |

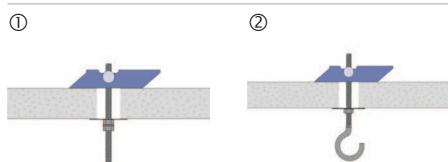
Building materials



Characteristics

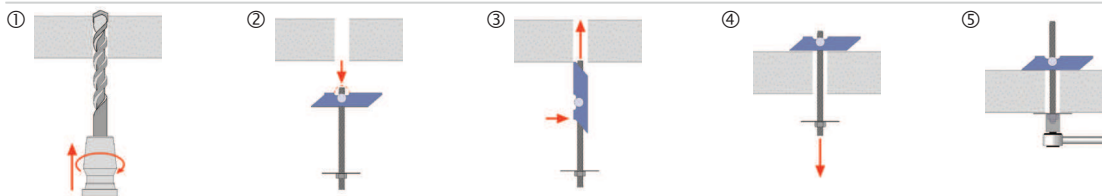
- High loads for suspended rod
- Min. cavity depth of 70 mm needed
- With hook = MK-H or threaded rod = MK-M
- A large expansion area for soft base materials

Applications



- ①+② Rotating threaded rod allows precise levelling of the fixing point
- Assembling of air ducts, contact rails and lighting rails

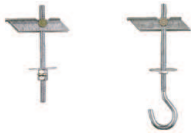
Installation



- ① Make the drill hole
- ② Screw the rod back not to obstruct the toggle when turning back into the setting position
- ③ Insert the Cavity Toggle into the hole
- ④ Retract the Cavity Toggle and turn in the thread if necessary
- ⑤ Tighten the nut on the Cavity Toggle



MK-M / MK-H

| Name | | MK- M5 | MK- H5 | MK- M6 | MK- H6 | MK- M8 | MK- H8 | MK- M10 | |
|------------------|---|--------|---------|---------|---------|---------|---------|---------|---------|
| | With threaded rod | x | | x | | x | | x | |
| | With hook | | x | | x | | x | | |
| N _{Rec} | - Gypsum plasterboards d = 12.5 mm ¹⁾ | 0.23 | | 0.25 | | 0.3 | | | |
| | - Chipboard d = 13 mm ¹⁾ | 0.4 | | 0.45 | | 0.5 | | 0.77 | |
| | - Cement fiber boards d = 12 mm ¹⁾ | 0.65 | | 0.7 | | 0.75 | | 0.92 | |
| | - MF-H ²⁾ | 0.2 | | 0.25 | | 0.35 | | | |
| h _{ef} | Effective anchorage depth | mm | 50 | 30 | 60 | 50 | 50 | 25 | 100 |
| h _e | Min. insertion depth | mm | 70 | | 70 | | 70 | | 100 |
| d _s | Thread-Ø | mm | 5 | | 6 | | 8 | | 10 |
| l _s | Thread length | mm | 100 | 70 | 100 | 90 | 100 | 90 | 200 |
| SW | Spanner size | mm | 8 | | 10 | | 13 | | 17 |
| d ₀ | Drill hole-Ø in the building material | mm | 15 | | 18 | | 20 | | 30 |
| l _k | Max. usable length | mm | 50 | 30 | 60 | 50 | 50 | 25 | 100 |
| d _k | Supporting width | mm | 65 | | 71 | | 73 | | 141 |
| |  | | 1826510 | 1826520 | 1826610 | 1826620 | 1826810 | 1826820 | 1826910 |

MK-M / MK-H Cavity Toggle

1) Safety factor 3

2) Hook-deformation: Safety factor 3