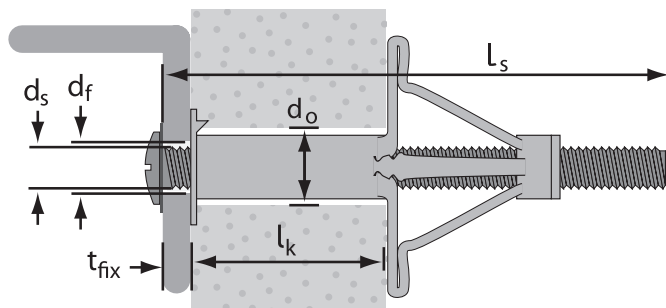
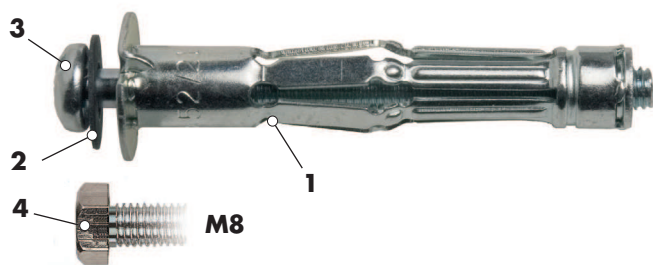




## MHD-S Cavity Wall Anchor



### Name

1	Plug MHD	Zinc plated steel	3	Screw with mushroom head (M4-M6) Zinc plated steel
2	Washer	Zinc plated steel	4	Hexagon screw (M8) Zinc plated steel

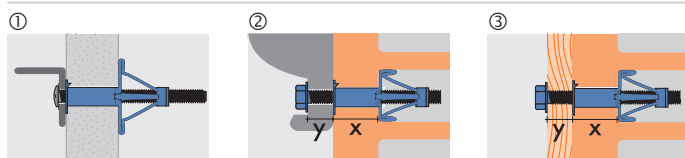
### Building material



### Characteristics

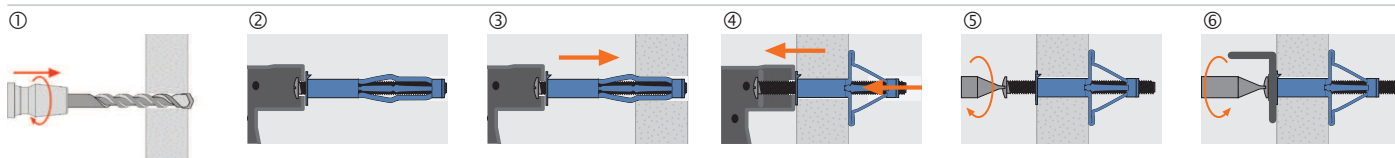
- Pre-assembled Cavity Anchor for fixing in gypsum plasterboards, cement fiber boards, perforated and concrete brick
- Controlled, quick and simple installation with the setting tool
- Anchor fully assembled
- Collar ensures a tight fit in base material
- Combined screw setting recess to accept all types of screw bits
- Used to DIN 18183 standards

### Applications



- Fixing of acoustic ceilings and light building materials

### Installation



- ① Take drill hole- $\varnothing$  from the table
- ② Place the Cavity Wall Anchor screw head „excluding the washer“ into the setting tool
- ③ Insert the Cavity Wall Anchor into the base material
- ④ Expand the Cavity Wall Anchor with the setting tool until it is firmly fixed (do not over tighten!)
- ⑤ Remove the screw
- ⑥ Attach the element with the fixing screw



## MHD-S with Screw

Stamping		4x20 / 8 (XS)				4x32 / 13				4x46 / 18				4x59 / 42				5x37 / 15				5x52 / 21				5x65 / 34				5x80 / 50				6x37 / 15				6x52 / 21				6x65 / 34				6x80 / 50				8x37 / 15				8x55 / 21				8x65 / 34				8x80 / 50			
		Plug size		M 4		M 5		M 6		M 8																																																							
N <sub>Emp</sub> <sup>1)</sup>	- Plasterboard d = 12.5 mm	0.15		0.18		0.2		0.28		0.3																																																							
	- Wood plate d = 13 mm	0.2		0.25		0.42		0.45																																																									
	- Cement fibre board d = 12 mm	0.35		0.4																																																													
l <sub>s</sub>	Screw length	mm	25	41	54	54	67	45	60	74	89	45	60	74	88	45	65	75	90																																														
d <sub>0</sub>	Drill hole-Ø	mm	8				10				12				12																																																		
d <sub>f</sub>	Clearance hole in fixture	mm	5				6				7				9																																																		
d <sub>s</sub>	Screw-Ø	M	4				5				6				8																																																		
t <sub>fix</sub>	Assembling usable length	mm	-12	-16	-23	-16	-16	-20	-24	-16	-26	-16	-24	-26	-26	-20	-25	-25	-30																																														
l <sub>k</sub>	Usable length minimal-maximal	mm	0-8	3-13	3-18	16-24	32-42	5-15	5-21	16-34	32-50	5-15	5-21	16-34	32-50	5-15	5-21	16-34	32-50																																														
			1870140	1870141	1870142	1870143	1870144	1870161	1870162	1870163	1870164	1870181	1870182	1870183	1870184	1870191	1870192	1870193	1870194																																														



## MHD-S Cavity Wall Anchor

1) Safety factor 3

## MHD without screw

Stamping		4x20 / 8(XS)				4x32 / 13				4x46 / 18				4x59 / 42				5x37 / 15				5x52 / 21				5x65 / 34				5x80 / 50				6x37 / 15				6x52 / 21				6x65 / 34				6x80 / 50				8x37 / 15				8x55 / 21				8x65 / 34				8x80 / 50			
		h <sub>s</sub>	Plug length	mm	20	32	46	46	59	37	52	65	80	37	52	65	80	37	55	65	80																																												
d <sub>k</sub>	Plug collar-Ø	mm	13.5	13.5	13.5	13.5	13.5	16	16	16	16	17.5	17.5	17.5	17.5	17.5	17.5	17.5	17.5																																														
d <sub>nom</sub>	Usable screw-Ø	mm	4				5				6				8																																																		
l <sub>k</sub>	Usable length maximal	mm	8	13	18	24	42	15	21	34	50	15	21	34	50	15	21	34	50																																														
			1870040	1870041	1870042	1870043	1870044	1870061	1870062	1870063	1870064	1870081	1870082	1870083	1870084	1870091	1870092	1870093	1870094																																														



## MHD



## SR-H, SR-O and SR-L



Screw	M	SR-H Hook bolt						SR-O Eye hook						SR-L Corner screw								
		4 x 40	5 x 45	5 x 60	5 x 70	6 x 40	6 x 60	4 x 40	5 x 45	5 x 60	5 x 70	6 x 40	6 x 60	4 x 40	5 x 45	5 x 60	6 x 40	6 x 60				
Material		galvanized																				
d <sub>s</sub> Screw-Ø	M	4	5			6			4	5			6			4	5			6		
l <sub>s</sub> Screw length	mm	40	45	60	70	40	60	40	45	60	70	40	60	40	45	60	40	60	40	45	60	
l <sub>G</sub> Thread length	mm	38	42	58	66	38	56	38	42	58	66	38	56	38	42	58	38	56	38	42	58	
		1871542	1871553	1871554	1871556	1871563	1871566	1871342	1871353	1871354	1871356	1871363	1871366	1871442	1871453	1871454	1871463	1871466				

## Screw galvanized for MHD

### Setting tools MHD-WZ for MHD-S

The following setting tools are suitable for assembling the MHD/MHD-S Cavity Wall Anchors.

M4 - M6



1870502

M4 - M6  
"reinforced"



11870503

M4 - M8



1870504