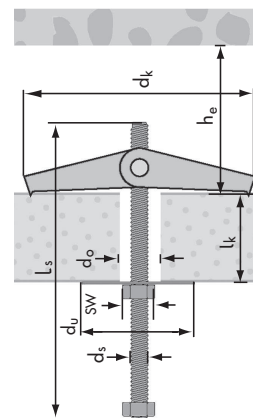
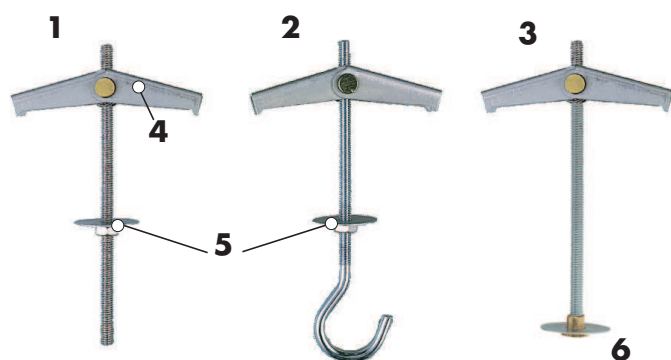




MF Cavity Toggle



Name

1	Cavity Toggle MF-M	Zinc plated steel	4	Wings	Zinc plated steel
2	Cavity Toggle MF-H	Zinc plated steel	5	Nut with washer	Zinc plated steel
3	Cavity Toggle MF-MM	Zinc plated steel	6	Slotted sleeve washer	Brass

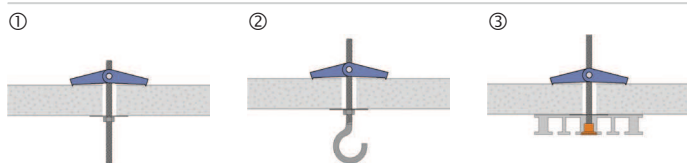
Building material



Characteristics

- The Cavity Toggle is a special cavity wall anchor made of steel
- The wings open independently by a spring action
- For small cavity depth
- With hook = MF-H / with threaded rod = MF-M

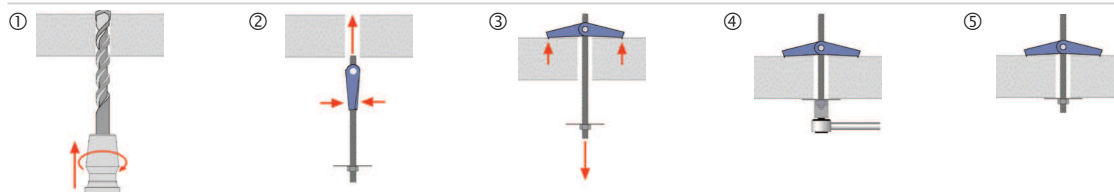
Applications



- ① Construction with thread connection
- ② Fixing of lamps
- ③ With brass slotted sleeve washer for curtain rail fixings

- Fixings of shelves, cable channels, cavity brick ceilings, chipboards, gypsum fiber boards

Installation



- ① Take drill hole- \varnothing and drill hole depth from the table
- ② Press the wings together and push the Cavity Toggle through the hole
- ③ Pull back the Cavity Toggle until the points on the wings anchor in the base material
- ④ Turn in the thread if needed, tighten the nut on the Cavity Toggle
- ⑤ Adjustment is possible at anytime



MF-M / MF-H / MF-MM

Name		MF- M3	MF- H3	M M3	MF- M4	MF- H4	M M4	MF- M5	MF- H5	MF- M6	MF- H6	MF- M10															
	With threaded rod	x			x			x		x		x															
	With hook		x			x			x		x																
	With brass slotted sleeve washer			x			x																				
N _{Rec}	- Gypsum plasterboard d = 12.5 mm ¹⁾	0.16			0.2			0.21		0.22		0.24															
	- Chipboard d = 13 mm ¹⁾	0.3			0.35			0.36		0.38		0.41															
	- Cement fiber board d = 12 mm ¹⁾	0.33			0.57			0.60		0.62		0.68															
	- MF-H ²⁾	0.025			0.075			0.2		0.25																	
h _e	Min. insertion depth	mm		35			46			46		90															
d _s	Thread-Ø	mm		3			4			5		6															
l _s	Thread length	mm		85	70	85	90	70	90	100	70	100	90	180													
SW	Spanner size	mm		5.5			7			8		10	17														
d ₀	Drill hole-Ø in the building material	mm		11			14			16		16	30														
l _k	Usable length max.	mm		50	30	50	50	30	50	60	30	60	50	150													
d _u	Ø Disc	mm		20			20			30		30	38.5														
d _k	Supporting width	mm		43			53			60		75	146														
				1825320			1825340			1825330		1825410		1825430		1825420		1825510		1825530		1825610		1825630		1825910	



MF-M / MF-H / MF-MM Cavity Toggle

1) Safety factor 3

2) Hook-deformation: Safety factor 3