

# Giunzioni

## Connecting fittings

# Serie GN450

## GN450 Series

GIUNZIONE DELLA SERIE GN450 E' CARATTERIZZATA DALL'ESSERE COMPLETAMENTE A SCOMPARSA UNA VOLTA MONTATA.

FIGURA A: LA PARTICOLARE FORMA INDICATA NELLA FIGURA A GENERA DURANTE L'ASSEMBLAGGIO UNA FORZA DI TRAZIONE TRA RIPIANO E IL MONTANTE.

FIGURA B-C : MOSTRA LA MODALITA' DI ASSEMBLAGGIO DELLA SERIE GN450 SIA CON SCORRIMENTO ORIZZONTALE DEL PIANO (FIG.B) SIA CON SCORRIMENTO VERTICALE DEL PIANO FIG. C.

SI FA NOTARE CHE PER ESEGUIRE I MONTAGGI E' NECESSARIO COMPRIMERE IL PERNO A SCOMPASA PER PERMETTERE IL PASSAGGIO DEL RIPIANO .

THE GN450 SERIES CONNECTING FITTING IS CHARACTERISED BY BEING COMPLETELY RETRACTABLE ONCE INSTALLED.

FIGURE A: THE SPECIAL SHAPE INDICATED IN FIGURE A GENERATES A TRACTION FORCE BETWEEN THE SHELF AND THE UPRIGHT WHEN ASSEMBLING.

FIGURES B: SHOW THE TWO ASSEMBLY METHODS OF THE GN450.

FIGURE C: SHOWING THE RETRACTABLE PIN TO BE COMPRESSED TO ALLOW THE STEP UP TO THE SHELF FINAL PLACEMENT.

figura : A Assemblaggio  
drawing: A Assembly

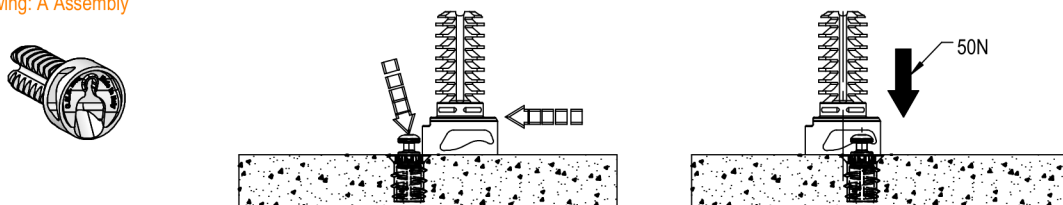


figura : B Assemblaggio Orizzontale  
drawing: B Horizontal Assembly

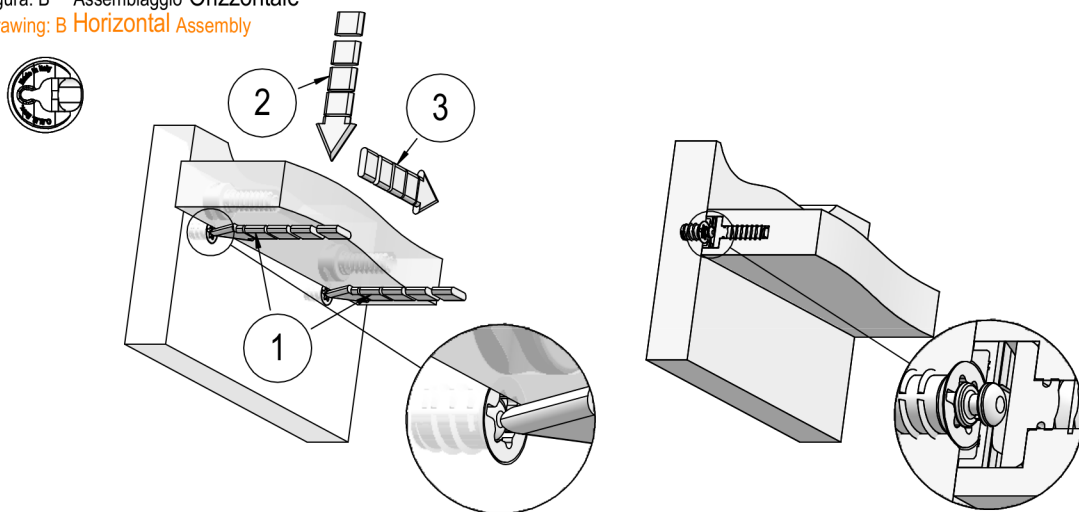
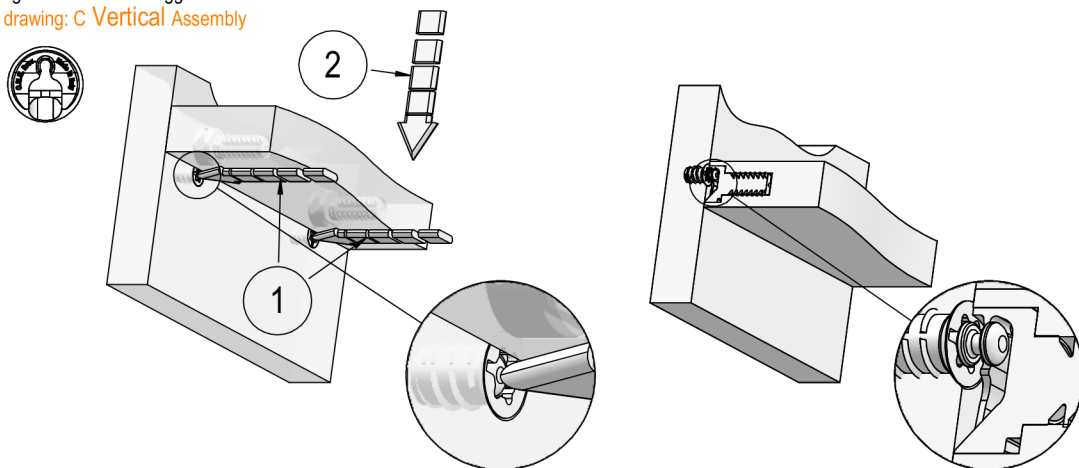


figura : C Assemblaggio Verticale  
drawing: C Vertical Assembly



# Giunzione tipo GN452.12 a scomparsa

## Invisible shelf support GN452.12 type invisible

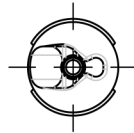
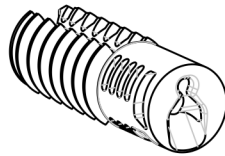


400 N

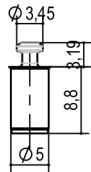


600 N

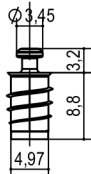
nylon grigio  
gray nylon



Assemblaggio Orizzontale  
Horizontal Assembly



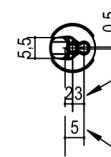
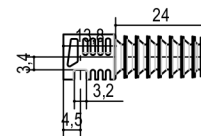
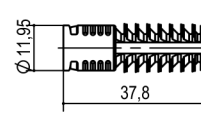
Perno a scomparsa ST  
Hidden pin ST  
A.GN400.ST.05.09.02



Perno a scomparsa ST.EU  
Hidden pin ST.EU

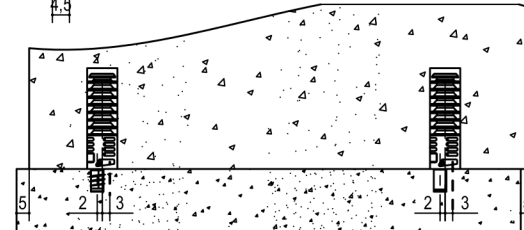


Chiave torx T25  
torx screwdriver T25  
A.GN400.STEU.05.09.02



sfasamento foratura  
Not aligned for assembly

sfasamento per assemblaggio  
Not aligned for assembly



direzione di assemblaggio  
assembling direction

